



RELIABLE & ACCURATE LOW DOSE PUMP

The Econ LD is a robust and compact peristaltic pump specifically designed for metering low volumes when reliability and accuracy are a must.



- Totally enclosed
- Adjustable 50:1
- Wall mountable or optional accessories
- Self-priming & can run dry
- cULus for indoor/outdoor use
- CE available



The patented quick release pump head design offers effortless tube replacement without tools.

Econ LD

- 0.04 to 50.7 oz/hr (1.3 to 1499.4 mL/hr)
- Pressures to 80 psi (5.5 bar) maximum
- Quiet, long lasting brushless motor
- Adjustable potentiometer & on/off switch
- Shipping Weight: 4 lbs. (1.6 kg)
- Dimensions: 5.2 x 4.4 x 5.9 in.

Mounting Kit EC303

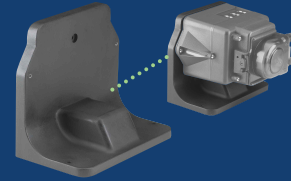
Attach pump to a Stenner tank or wall



Stand EC304

Mount pump to a wall or display on a flat surface

Vertical mount required for wet environments.



Optional mounting accessories sold separately

Flow Rate Output Chart

Item Number Prefix	Pump Tube	Roller Assembly	Approximate Turndown Ratio	Ounces per Hour	Pressure psi	Milliliters per Hour	Pressure bar
E10LHM	M	White	50:1	0.04-2.4	80	1.3-70.0	5.5
E10LHF	F	White	50:1	0.11-8.1	80	3.2-240.0	5.5
E10LHG	G	Black	50:1	0.50-25.1	80	14.8-742.3	5.5
E10LHH	H	Black	50:1	1.01-50.7	80	29.7-1499.4	5.5

Approximate Outputs @ 50/60Hz

Build An Item Number for the Pump or Tank System



Select **Item Number Prefix** from output chart above

Omit if not ordering a Tank System

Tank

- S7G** 7.5-Gallon UV Gray
- S7N** 7.5-Gallon White
- S1G** 15-Gallon UV Gray
- S1N** 15-Gallon White
- S3G** 30-Gallon UV Gray
- S3N** 30-Gallon White

NOTE: Tanks also sold separately.

Voltage & Hertz/Cord

- A** 120V 60Hz
 - C** 230V 50HZ
INTERNATIONAL
- Contact factory for additional voltage and plug options.

Suction & Discharge Tubing

- 1** 1/4" White
- 5** 6 mm White *Europe*

Tube Material

- S** Santoprene®
- NOTE: Refer to chemical resistance guide for chemical compatibility